

**湘财股份有限公司**  
**2022 年度社会责任报告**

1994 1997 600095  
2020

65 5  
2022

" "

" "

"

" " "

2022

2

ESG

2022 1 1 2022 12 31

"

"

"

"

"

"

"

"

"

"

"

"

CASS-CSR4.0

GRI

GRI

Standards

2022

1.

ESG

2.

2022

500

3.

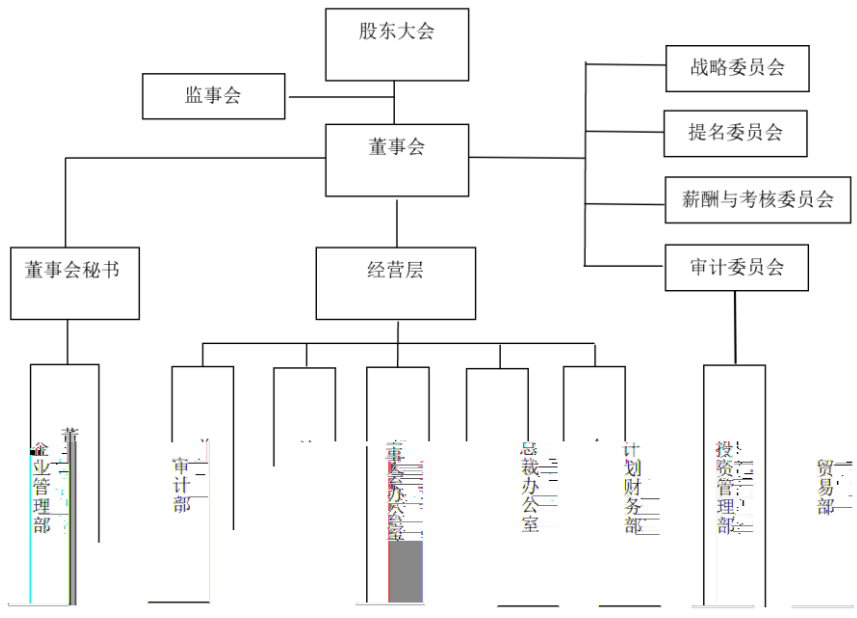
" "

4.

" " ESG  
2022 " " 3  
11

4.

" " " "



1

3

7

3

2022 7 8

7

3

1

4

"

— —

"

"

— —

"

"

"

11

"

"

"

"

"

"

500.00

2022

2022

2022

2022 10

"

"

2000

" . "

1872

1911

"

"

2022

1

2

3

4

5

2020

2012 37

3 —

2020-2022

2021

3.8

2021

50%



E

2022

"

"

"

"

"

"

2022

2022

--

" 2022

" " 2022

" " 2022

"

"





60

2022

2022







2023